

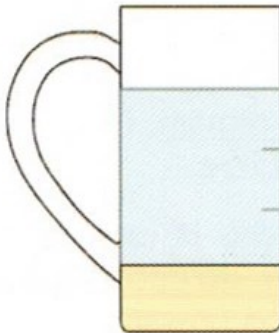
HOW TO USE MD10 SHAMPOO



1. Preparation of Shampoo

Shampoo 1 : Water 3 - Dilute the Shampoo well

Clean plastic bottle such as mineral water bottle, will be ideal, otherwise a jug.



3 parts of Water

1 part of Shampoo

- 2. Make sure the coat is tangle free.** Rinse the Dog to get rid of major grime and dirt such as sand, mud. **Make the coat and skin wet completely using shower or jug of water, so that the shampoo can penetrate into the coat properly.**
- 3.** Apply the shampoo, wash the dog. If the dog is very dirty, wash twice until the bubble looks white and clean. Care should be taken to prevent water from getting into the ear canal, nose or eyes. MD10 shampoo is NO STING to dog's eyes.
- 4.** Rinse thoroughly until water runs clear.
- 5.** Apply the conditioner if necessary. (See the opposite side)